

# "Happy Oak" Skyline Model Home

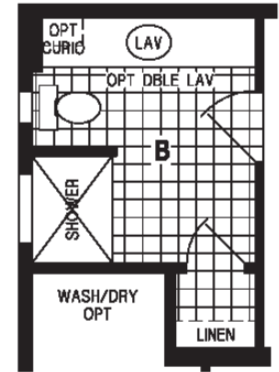


REXMERE VILLAGE

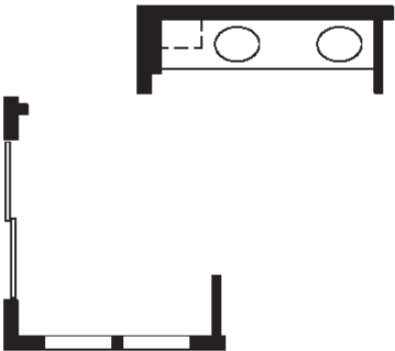
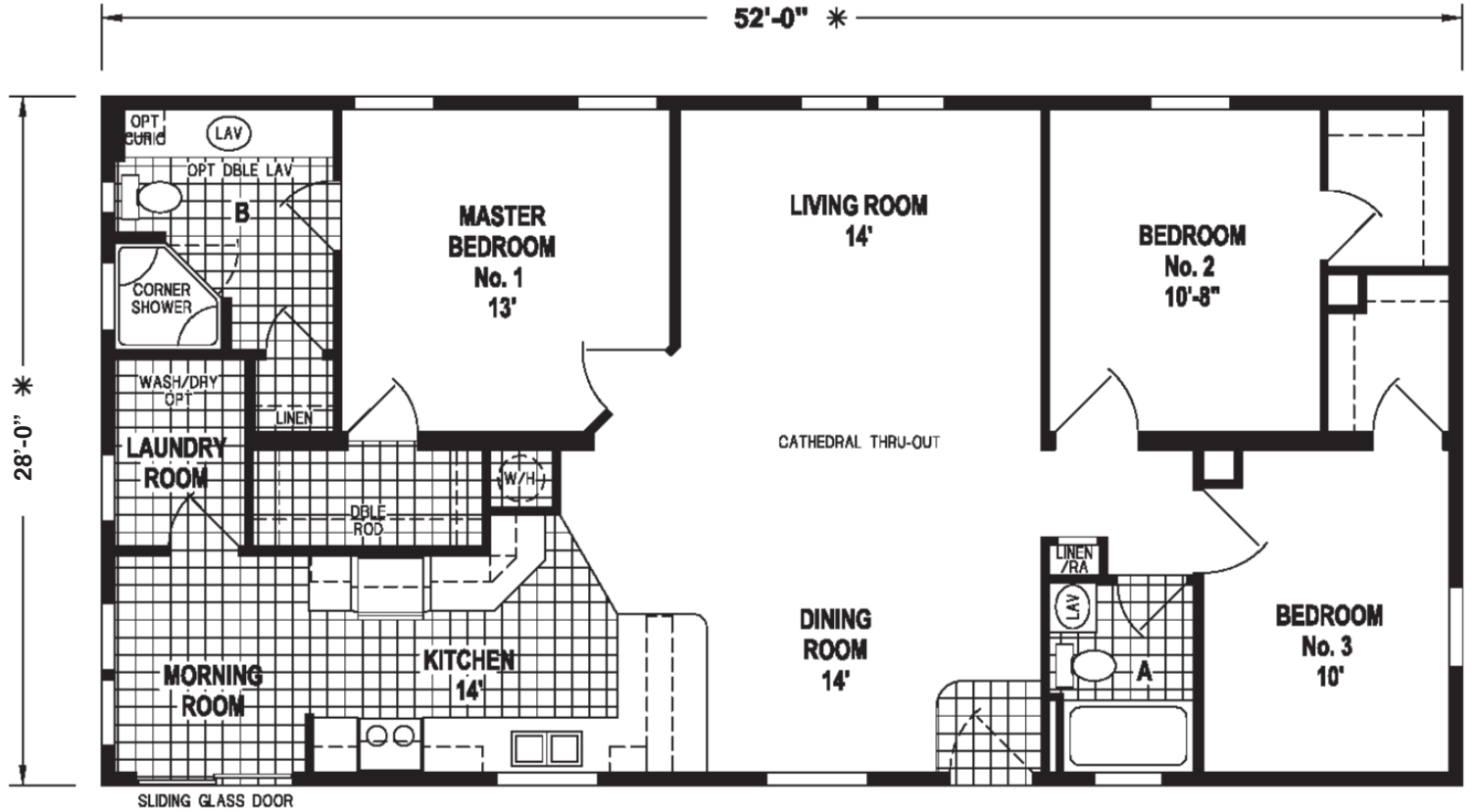
Affordable Living At Its Finest

PARADISE VILLAGE

# "Happy Oak"



OPTION 48" SHOWER



3 Bedroom, 2 Baths, 1,456 SF  
Shown with miscellaneous options

PARADISE VILLAGE

Affordable Living At Its Finest

REXMERE VILLAGE

# Happy Oak Skyline Model

FEATURE/MODEL NUMBER	SIZE	52 X 28
INSULATION PKG: R-19 CEILING; R-19 WALLS; R-11 FLOOR		<b>N807CT</b>
*100% TAPE & TEXTURED 1/2" DRYWALL THROUGHOUT WITH TEXTURED FINISH		INCL
FULLY PAINTED WALLS & CEILINGS		INCL
FULLY CASED WINDOW JAMBS		INCL
2X6 FLOOR JOIST 16" OC MAX SPACING		INCL
WIND ZONE III HUD CONSTRUCTION STANDARDS		INCL
APPRX 8" SIDE EAVES & 12" GABLE EAVES		INCL
8-FT SIDEWALLS WITH CATHEDRAL CEILING THROUGHOUT		INCL
GLASS BLOCK WINDOW AT GBATH TUB - PER PRINT		INCL
FIBERGLASS SUNBURST DOOR WITH STORM & DEADBOLT - PER PRINT		INCL
SGD FRONT OF LIVING ROOM, INSULATED W/GRIDS - PER PRINT		INCL
FIBERGLASS 9-LITE REAR DOOR W/STORM & DEADBOLT - PER PRINT		INCL
VINYL FRAMED INSULATED WINDOWS WITH GRIDS		INCL
3/8" OSB EXTERIOR SHEATHING ALL WALLS		INCL
HOUSE WRAP UNDER SIDING		INCL
25-YEAR OWENS-CORNING 3-TAB SHINGLES		INCL
2X6 EXTERIOR WALLS, 16" OC MAX SPACING		INCL
PREHUNG RAISED PANEL DOORS/JAMBS W/MORTISED HINGES		INCL
18FF 2 DOOR REFER		INCL
DELUXE ELECTRIC RANGE		INCL
VENTILATED WIRE SHELVING UTILITY ROOM AND CLOSETS		INCL
CORNER SHOWER, MBATH, PER PRINT		INCL
ELONGATED COMMODES		INCL
PORCELAIN LAVATORIES W/OVERFLOWS		INCL
1-PC FIBERGLASS TUB GBATH		INCL
WOOD CABINET DOORS OAK OR CHERRY OR WHITE RAISED PANEL.		INCL
6" CERAMIC BACKSPLASH IN KITCHEN, 1 ROW AT TOPS		INCL
6" CERAMIC BACKSPLASH IN BOTH BATHS		INCL
SHELF OVER REFER		INCL
DRAWER OVER DOOR CABINET CONSTRUCTION IN KITCHEN		INCL
DRAWER BANK KITCHEN AND MBATH - PER PLAN		INCL
36" HIGH LAV BASE ALL BATHS		INCL
LINED KITCHEN CABINETS W/ADJUSTABLE OVERHEAD SHELVES		INCL
SINGLE LEVER FAUCET W/SPRAYER, KITCHEN		INCL
PLUMB & WIRE FOR WASHER/DRYER		INCL
30 GAL 220V DUAL ELEMENT WATER HEATER		INCL
WATER SHUTOFF VALVES THROUGHOUT		INCL
RECESSED CAN LIGHTS, KITCHEN		INCL
200 AMP ELECTRIC SERVICE		INCL
CEILING LIGHTS ALL BEDROOMS		INCL
WIRE, BRACE, & DBL SWITCH FOR FAN: LR & MBR		INCL
FULL BASEBOARD TRIM THROUGHOUT		INCL
DESIGNER WINDOW TREATMENTS WITH 1 1/2" WOOD-BLINDS		INCL
3" CROWN THROUGHOUT EXCEPT SMALL CLOSETS		INCL
100% NYLON CF CARPET & REBOND PAD LIVING AREAS AND BEDROOMS		INCL
CONGOLIUM VINYL FLOORS: KITCHEN, BATHS, UTILITY RM, & FOYER		INCL
<b>BASE PRICE</b>		<b>\$89,900</b>



Upgrades shown: Half porch and French doors.



Upgrades shown: Half porch.



Upgrades shown: Hardwood laminate and ceramic tile flooring.



Upgrades shown: Paned French doors, ceramic tile flooring and upgraded refrigerator.



Upgrades shown: Ceramic tile & hardwood laminate flooring and upgraded refrigerator.





Upgrades shown: Hardwood laminate flooring and upgraded lighting.



